

STEPWING - G1



OWNER'S MANUAL

STEPWING

CONTENTS

• IMPORTANT SAFETY NOTICE	2
• STEPWING PARTS AND COMPONENTS	4
• ASSEMBLY INSTRUCTION	5
A.FRONT TIRE ASSEMBLY.....	6
B.PEDAL ASSEMBLY.....	7
C.UPRIGHT TUBE ASSEMBLY.....	8
D.HANDLEBAR ASSEMBLY.....	9
E.PUMPING TIRES.....	10
• CHECK BEFORE RIDING	10
• HOW TO RIDE.....	11
• HOW TO FOLD.....	12
• USE GUIDE AND MAINTENANCE.....	13

NOTE: Any photos of the scooter or decals in the owner's manual are intended to be as reference mainly, and it may be some different from the real unit you purchase.

Copyright © 2013 Brizon

IMPORTANT SAFETY NOTICE

WARNING!

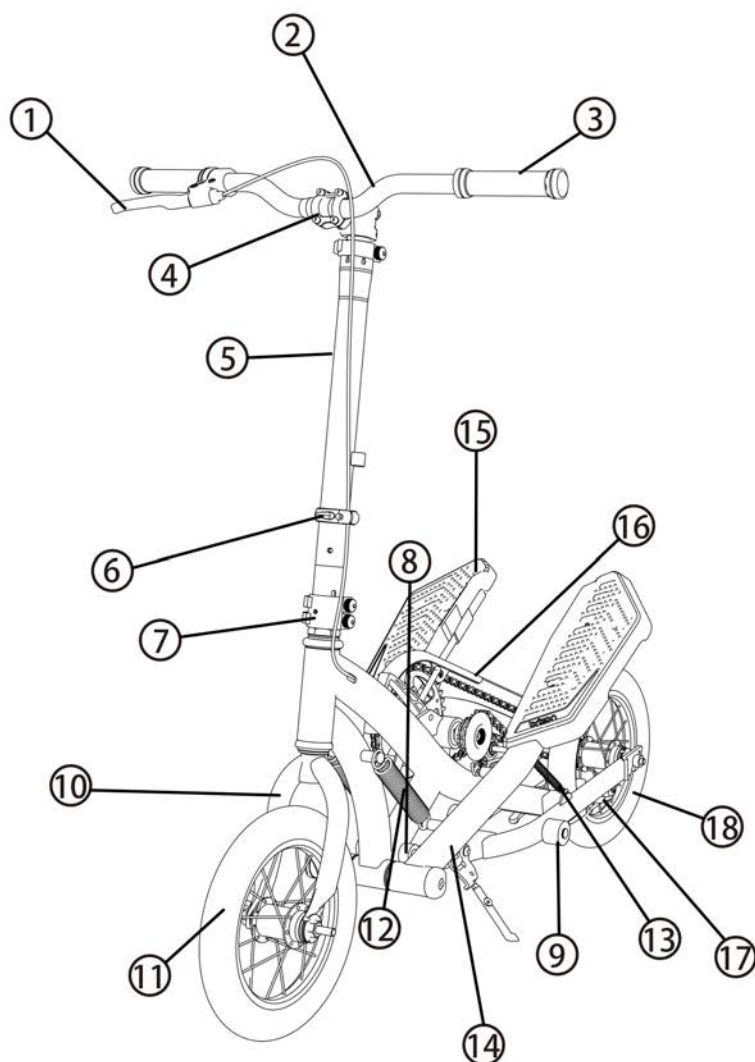
PRECAUTIONS:

Like any other moving products, scooter riding can be a hazardous activity and possible to get into dangerous situations. Be sure to read the entire manual before riding. In particular, pay attention to the following notices.

1. STEPWING is not a transportation vehicle, and please DO NOT ride in the public traffic.
2. Not suitable for use on public highways. It is dangerous to use it in public traffic. Never ride in traffic or on the street and watch your surroundings for pedestrians, bikes, and skateboard and scooter riders.
3. DO NOT ride the scooter with only single hand but both two hands. Please must hold the handlebars with two hands tightly.
4. DO NOT make a short or sharp turn when riding the scooter, and DO NOT lay your body on the handlebar when making a turn, as the handlebar of the scooter can be twisted, and the scooter may go out of control.
5. DO NOT ride the scooter in the slope of hill, especially DO NOT go down hill in a long descending slope, as it can damage the unit or cause brake failure. Please must be careful when passing such areas.
6. Press the brake lever on handlebar to ensure the brake is functioning. The brake bracket may be hot after continuous use, and DO NOT touch the brake bracket to prevent hurts.
7. All children and preteens should ride with adult supervision at all times. Supervisor shall inspect the scooter prior to starting to use, making sure all parts are fully assembled and tightened to prevent accidents.
8. DO NOT use attachments not included with the scooter. DO NOT attempt to do any modifications by yourself.

9. Make sure all components are assembled and secured sturdily and always replace worn or broken parts immediately.
10. Injury may occur if the precautions above are not observed.
11. Rear guard keeps fingers away from moving parts
12. The scooter is for the user aged above 12 -year-old, and the maximum loading is 100KG(220lbs).
13. Always wear safety equipment such as ANSI, SNELL, CPSC or ASTM approved helmet, knee pads and elbow pads, Always wear a helmet when riding your scooter and keep the chinstrap securely buckled. Always wear shoes.
14. Ride on smooth, paved surface away from motor vehicles. DO NOT use the scooter on wet and uneven ground with rocks or gravel as the scooter can be slipped and out of control. In addition, DO NOT use the scooter at dusk or night or in wet or icy conditions.
15. Avoid sharp bumps, drainage grates, and sudden surface changes. Scooter may suddenly stop.
16. Avoid streets and surfaces with water sand, gravel, dirt, leaves, and other debris. Wet weather impairs traction, braking, and visibility.
17. Do not ride at night.
18. Brake will get hot from continuous use. Do not touch after braking.
19. Avoid excessive speed associated with downhill rides.
20. Adults must assist children in the initial adjustment procedures to unfold scooter, adjust handlebar and steering to height, and finally to fold scooter. Adult's supervision is required
21. Obey all local traffic and scooter riding laws and regulations.
22. Warning! One rider per scooter, and please. It's is forbidden for more than one rider to use the scooter.

PARTS AND COMPONENTS



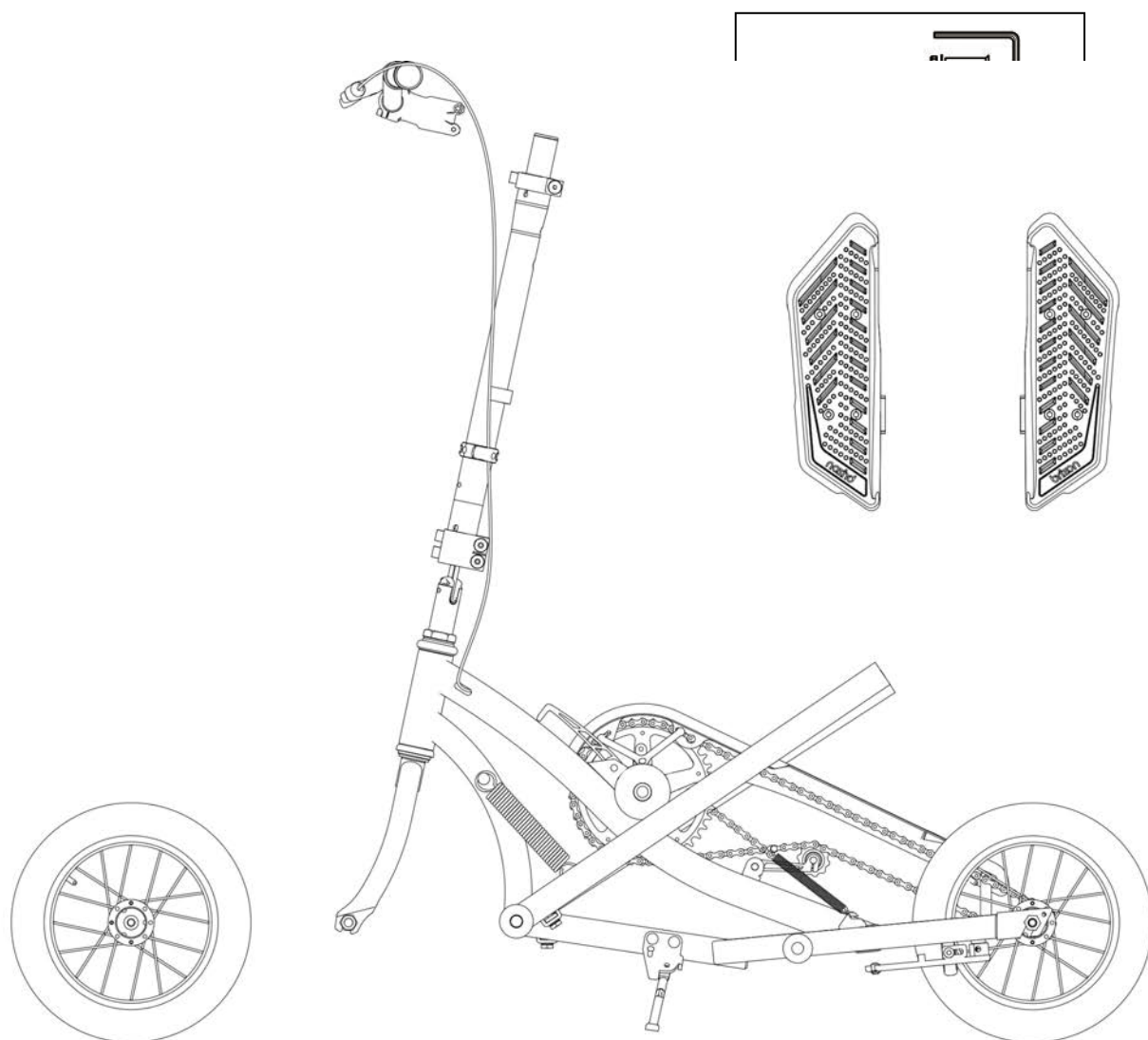
PARTS LIST			
NO.	NAME	NO.	NAME
1	Brake Lever	10	Front Fork
2	Handlebar	11	Front Tire
3	Hand Grip	12	Tension Spring
4	Stem	13	Chain Spring
5	Upright Tube	14	Leg Tube
6	Cable Ring	15	Pedal
7	Quick Release Clamp	16	Chain cover
8	Upward stopper	17	Rear brake
9	Downward stopper	18	Rear Tire

ASSEMBLY INSTRUCTION

WARNING!

MUST BE ASSEMBLED BY THE ADULT BUT NOT CHILDREN

Open the box, and take out the Scooter Unit, Handlebar Set, front tire, pedals and Tool Kits. Please check whether all parts and components are complete.



A. FRONT TIRE ASSEMBLY

STEP 1

Take out the front tire and both Allen wrench from package



STEP 2

Loosen both sides of nuts and screw out.



STEP 3

Take out the rack from the fork. Set the wheel into the front fork, install the retainer making sure the tabs are in the fork, put the wheel in the center of the fork to the end.



STEP 4

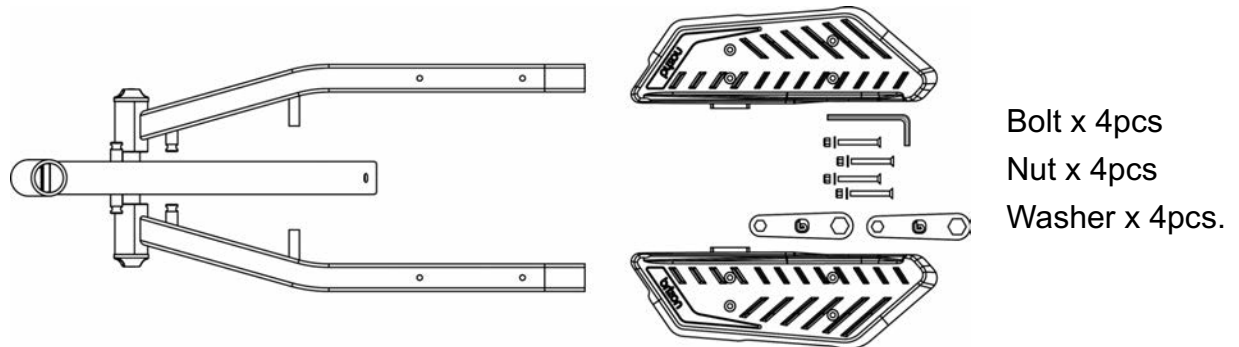
Tighten the Axle nuts with Wrench in the same time.



B. PEDAL ASSEMBLY

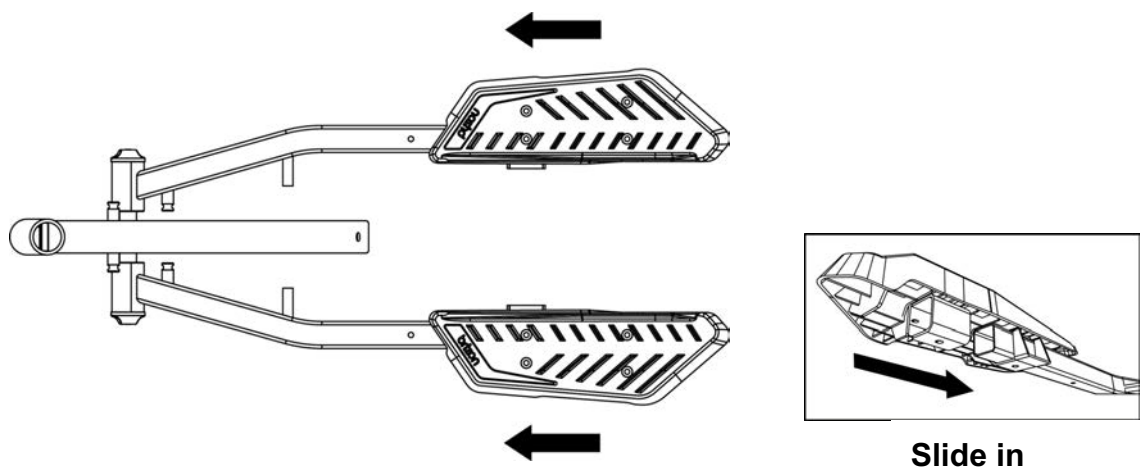
STEP 1

Take out pedals, Allen wrench, screw sets from package.



STEP 2

Insert right pedal on the right leg tube, and left pedal on the other side,.

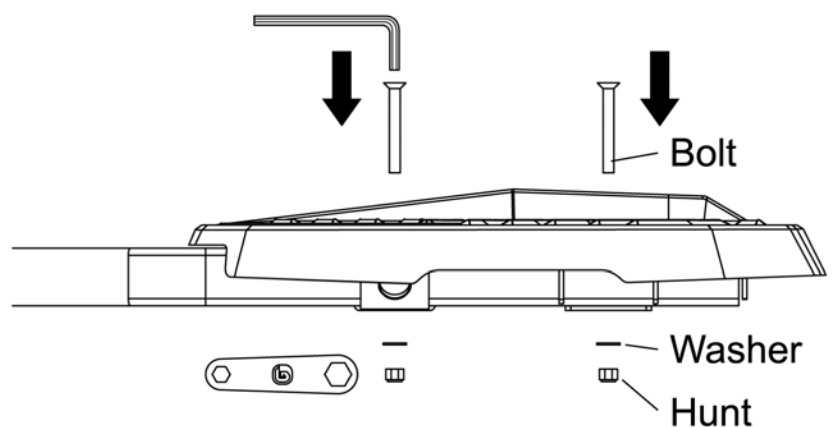


STEP 3

Insert the bolts into the pedal
tighten the both bolts and
tighten with attached tools.

Note:

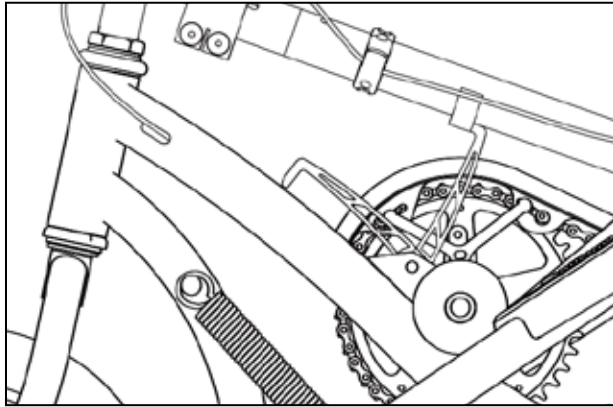
The washer shall be inside



C. UPRIGHT TUBE ASSEMBLY

STEP 1

Take out the upright tube from the foldable snap hook buckle(1), then pull up the upright tube to the front position as attached illustration.(2)



STEP 2

Insert the upright tube into scooter's main body completely.



STEP 3

Screw in the upper nut on quick release set probably, and latch the quick release



STEP 4

Do the same steps again for the lower nut on quick release set to complete the upright tube assembly.



D. HANDLEBAR ASSEMBLY



Assemble the handlebar set to the upright tube. Position the handlebar in the centering of main body.



Fasten all of the bolts to the stem with Allen wrench.

E. PUMPING TIRES.

The front and rear pneumatic tires on the STEPWING come with lower pressure from the factory for transportation reasons.

To fill the tires, remove the valve cap and attach the pump to the tire. Alternate between letting air into the tires and checking the pressure to ensure that you get the proper amount. Once the tires are full, remember to screw the cap back on. The tire pressure shall be adjusted according to the rider's weight and riding preferences.



NOTE: Tire pressure may affect the riding performance. Lower pressure makes for a comfortable but slower ride, ride higher pressure makes for a faster but slightly bumpier ride. Use a tire gauge. Do not ride with low pressure

CHECK BEFORE RIDING

1. First of all, please make sure the brake can be functioned.
2. Secondly, please check whether the quick release clamp is tightened, the handlebars are sturdy, and all screws are fixed well.
3. Thirdly, please check the front wheel and rear wheel can be rotated smoothly, and air pressure of tires is high enough.
4. Fourthly, you can start to ride the scooter after checking the above points.

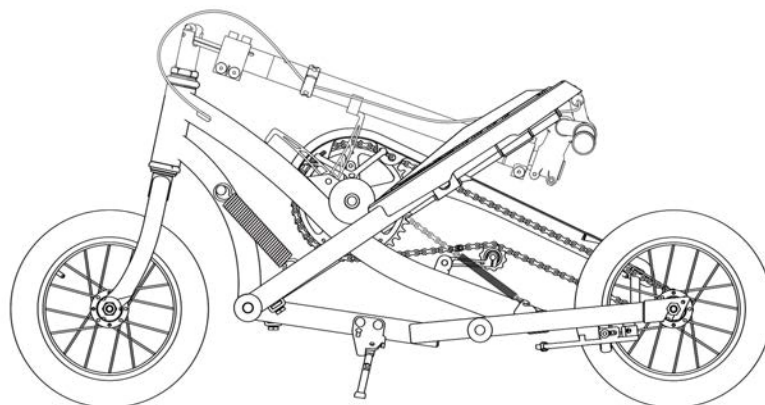
HOW TO RIDE

1. Grasp the handlebar with both of hands, and place one foot on the lower action deck properly.
2. Push the scooter forward with the other foot.
3. Place the other foot on the other side action deck, step by step with each foot, and STEPWING will be propelled forward. The footplate operate independently for a fun ride and workout on the go.
4. For controlled stops, apply the brake by grip the brake lever. Applying the brake at various speeds.
5. Ride the STEPWING in open area free from obstructions.



HOW TO FOLD AND UNFOLD

1. To fold the handlebars tube by pulling outward on the quick-release lever.
2. Pull up the Handlebar Set smoothly, and slide the Handlebar Set downward to the rear wheel part.
3. Buckle up the upright tube with the foldable snap hook buckle
4. Make sure the hook buckle connects to the lock bracket on the handlebar
5. To assemble the handlebar, take out the upright tube from the foldable snap hook buckle and insert the upright tube to the end.
6. Latch the quick release lever tightly. Make sure the handlebar is sturdy.



USE GUIDE AND MAINTENANCE

1. Please rotate the bearings and wheels to see whether they are workable, and do some adjustments or add lubricant if it's needed after the first 2 week's use.
2. It is not suggested to cover the painted metal tube with plastic bags or cloth. DO NOT use wet cloth to clean the painted body to prevent loss of gloss, peeling off, or loss of gloss. After one year's use, if the scooter body has lost gloss, the car wax can be applied on the body to polish the painted parts.
3. If the front fork and wheel or the frame and wheels are not fixed tightly, you can use the wrench to tighten the bolts properly, but not too much tensely or loosely.
4. The tires are non-durable and may be worn out after some time's use, and please contact the seller to replace new tires for safe ride.
5. If the brake cable is loose, please screw out the bolt and nut on the brake gear, and pull the brake cable out with clamp. When the brake cable is pulled tensely, please screw in the bolt and nut on the brake gear at the same time.
6. The self-locking elements might lose their effectiveness, so please always make sure all components are assembled and secured sturdily before each use.

WARRANTY INFORMATION

The manufacturer warrants that our products and accessories are free from defects material or workmanship for a period of one year from the initial date of purchase shown on the original cash register receipt.

This limited warranty does not cover any damages, failure or loss caused by improper assembly, maintenance or storage.

There are no other expressed or implied warranties.

The limited warranty will be void if the product is ever:

- Used in a manner other than for recreation
- Modified in any way
- Rented or commercial uses
- Consumer abuse, neglect
- Use by riders weighing over the maximum weight listed on the product

The manufacturer is not liable for incidental or consequential loss or damage due directly or indirectly to the use of this product. The manufacture reserves the right to repair, supply replacement parts, or replace a defective product.

The manufacture does not offer an extended warranty. If you have purchased an extended warranty, it must be honored by the store at which it was purchased For your records, save your warranty card and original sales receipt.

WARRANTY CARD

Model:

Date of purchase:

Authorized dealer name/stamp:

